

Product Passport

Door system in accordance to EN 14351-1 +A1

System	LK100 ECO Lift and slide doors
Product family	Thermally insulated Lift and slide doors
Materials	Aluminium: EN-AW 6063 T5 Thermal breaks: polyamide + PU Gaskets: EPDM
Surface treatment	Anodizing Powder coating
Glass / infill panel	thickness 29..73 mm
Frame depth	230 mm
Frame width	44 mm



Product standard (hEN):
EN 14 351-1:2006+A1:2010

Test reports:
VTT-S-02629-18EN
17-002085-PR01
17-002085-PR02
EUF129-20005349-T1-EN

Properties/ Class *)

Resistance to fire (E / EI) npd	Smoke leakage (S) npd	Self-closing (C) npd	Resistance to wind load C4	Watertightness E900
Dangerous substances npd	Impact resistance npd	Load-bearing capacity of safety devices npd	Height and width ***) 2535 (h) x 1782 (w)	Ability to release npd
Acoustic performance R_w (C; C_{tr}) **) 44 (-1; -5) dB	Thermal transmittance (U_w) **) $\geq 0,67$ W/m ² K	Radiation properties (g_w / τ_v) **)	Air permeability 4	burglary resistance npd

*) Only tested/ calculated maximum values of the system for single-leaf door

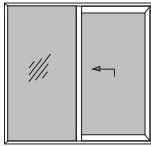
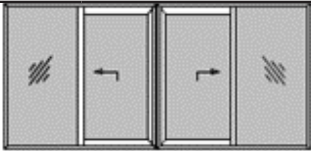
**) Declared value according to project

***) maximum dimensions of the free access opening of a single-leaf lift and slide door

Product Passport

Door system in accordance to EN 14351-1 +A1

Summary of system properties:

ref No. for hEN-standard	Name:	LK100eco			LK100eco 2-leaf		
	Description:		Thermally insulated single-leaf lift and slide door				Thermally insulated 2-leaf lift and slide door
-	Resistance to fire (E / EI)	npd			npd		
-	Smoke leakage (S)	npd			npd		
-	Self-closing (C)	npd			npd		
4.2	Resistance to wind load ¹⁾	C4 (1600 Pa, ≤1/300)			C3 (1200 Pa, ≤1/300)		
4.5	Watertightness ^{1) 5)}	E900			6A		
4.6	Dangerous substances	npd			npd		
4.7	Impact resistance	npd			npd		
4.8	Load-bearing capacity of safety devices	npd			npd		
4.9	Height and width ⁴⁾	4)			4)		
4.10	Ability to release	npd			npd		
4.11	Acoustic performance ^{2) 4)}	R _w 44dB	R _w +C 43dB	R _w +C _{tr} 39dB	R _w npd	R _w +C npd	R _w +C _{tr} npd
4.12	Thermal transmittance ³⁾ (U _d)	0,67 W/m ² K			npd		
4.13	Radiation properties ⁴⁾ (g _d / τ _v)	4)			4)		
4.14	Air permeability ¹⁾	4			4		

NOTE! Values in the table apply for

¹⁾ Single-leaf lift and slide door 2150 x 2150

²⁾ Single-leaf lift and slide door 2660 x 2500

³⁾ Thermal transmittance is calculated for door size 2400 x 2500

⁴⁾ Values according to project are declared separately

⁵⁾ For 2-leaf lift and slide door 8000 x 2700

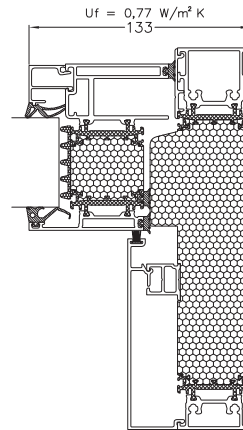
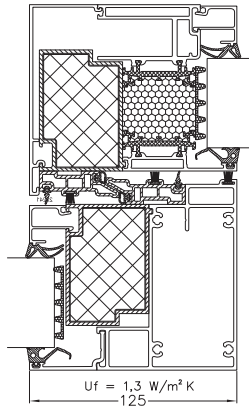
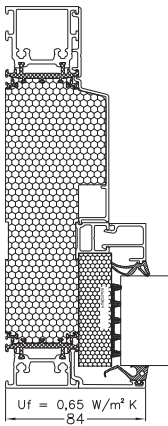
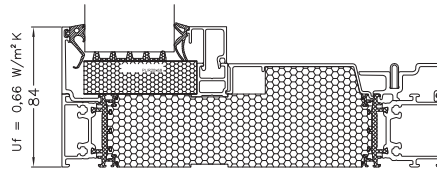
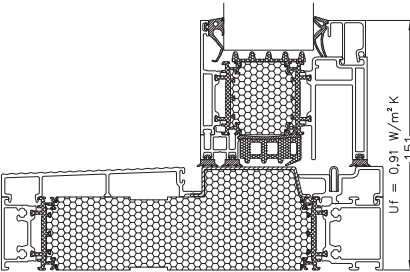
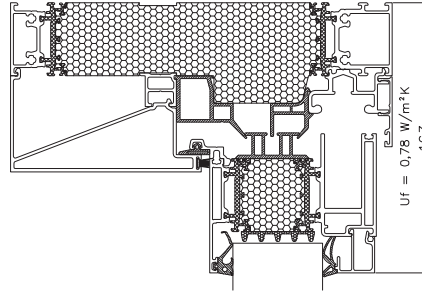
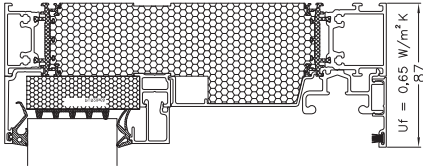
Product Passport

Door system in accordance to EN 14351-1 +A1

LK100 ECO lift and slide door (2400 x 2500 mm) U_g -values:

The thermal transmittance of the frames (U_f) are defined according to standard SFS-EN ISO 10077-2:2012

Specific values according to project are declared separately.



Purso LK100 ECO	U_g [W/m²K]	U_d [W/m²K]
Lift and slide door	0,70	0,80
3 layer glazing	0,60	0,72
Swisspacer ULTIMATE	0,54	0,67
2400 x 2500 mm		

Product Passport

Door system in accordance to EN 14351-1 +A1

LK100 ECO Lift and slide door
determination of sound insulation:

Glazings:

Glass-1: 3k - 4f - 12arg

Glass-2: 3k - 6f / 4f / LSG acoustic8 - 16 arg

Glass-3: 3k - LSG acoustic12 / 6f / LSG acoustic8 - 12 arg

Number of door leaves	Door type	Tested glazing	Properties of glass			R _w [dB]	R _w + C [dB]	R _w + C _{tr} [dB]
			R _w	R _w + C	R _w + C _{tr}			
1	Fully glazed door	Glass-1	32	31	27	31	30	26
1	Fully glazed door	Glass-2	42	40	35	41	40	36
1	Fully glazed door	Lasi-3	49	48	43	44	43	39

Tested door size 2660 x 2500

Terms: R_w Sound reduction index (the higher the R_w number, the better the sound insulation)
 R_w+C Jet aircraft noise, sounds of fast trains, industrial noise (high and mid frequency)
 R_w+C_{tr} City traffic noise, sounds of slow trains, industrial noise (low and mid frequency)

Purso Oy
 Alumiinitie 1
 FI-37200 Siuro, Finland
 Tel. +358 3 3404 111
 E-mail purso@purso.fi
 web www.purso.fi