



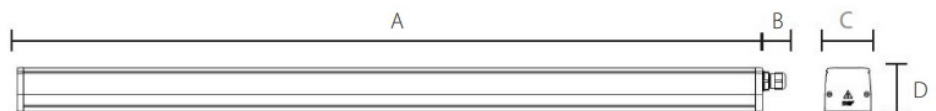
SNEP[®] MODE C - A new way of thinking about the big picture

SNEP[®] Mode C is suitable for many different spaces, such as retail and business premises, logistics centres, storage facilities, industrial halls, sports halls, and public spaces.

Full SNEP[®] lighting can be achieved by choosing a suitable light distribution, product dimensions, power class, control method and electrical connection for the space. SNEP[®] Mode C offers a solution that is care-free from design to installation and user-experience. The luminaire is made in Finland. High-quality optics alternatives guarantee the best suitable and flexible solution for a range of different heights and a number of different applications. For example, shelf-space optics can be used to highlight products in stores in an energy efficient way without glare. SNEP[®] Mode C can be used to illuminate large surfaces with a wide distribution or to effectively light up a vertical surface with asymmetric optics.

Product info

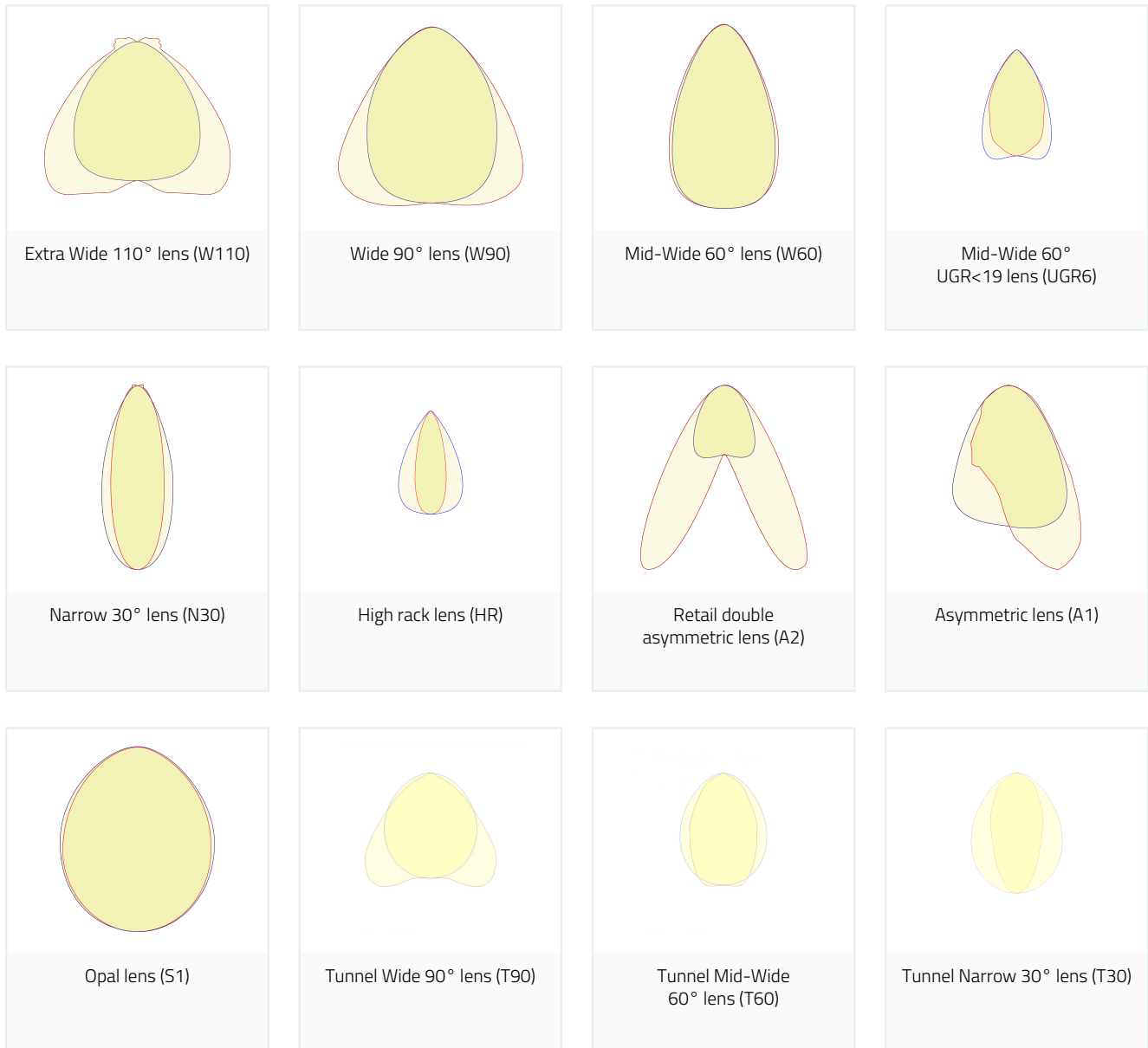
IP-class	IP44, IP20 (depending on the selected connection method)
Mechanical impact resistance	IK08
Protection class	I
Ambient temperature	Ta -25...+50°C / -25...+45°C / -40...+50°C depending on the selected power and electronic control gear versions
Voltage	200-240 Vac
Power Factor	>0,95
Frequency	0/50/60 Hz
Frame Structure	Frame recycled Purso Greenline aluminium profile, end caps durable and V0-classified flame retardant PC-plastics
Colour	Anodized grey and white RAL 9010. Other colour options possible, please contact our sales.
Optical cover / Optics	Injection molded PMMA-lense optics
CCT / CRI	<ul style="list-style-type: none">▪ 3000K CRI > 80▪ 4000K CRI > 80▪ 5000K CRI > 80▪ 3000K CRI > 90▪ 4000K CRI > 90▪ 5000K CRI > 90
Electronics	<ul style="list-style-type: none">▪ On/Off▪ DALI▪ Industrial ON/OFF▪ Industrial DALI
Installation method	With MODE-brackets. Sport facilities with Sports-brackets.
Lumen maintenance	L80B50 100 000h
Failure rate	100 000h / 10 %
Warranty	5-years.
Length	A 1140/1700/2260/2820 mm, B 40 mm, C 70 mm, D 65 mm



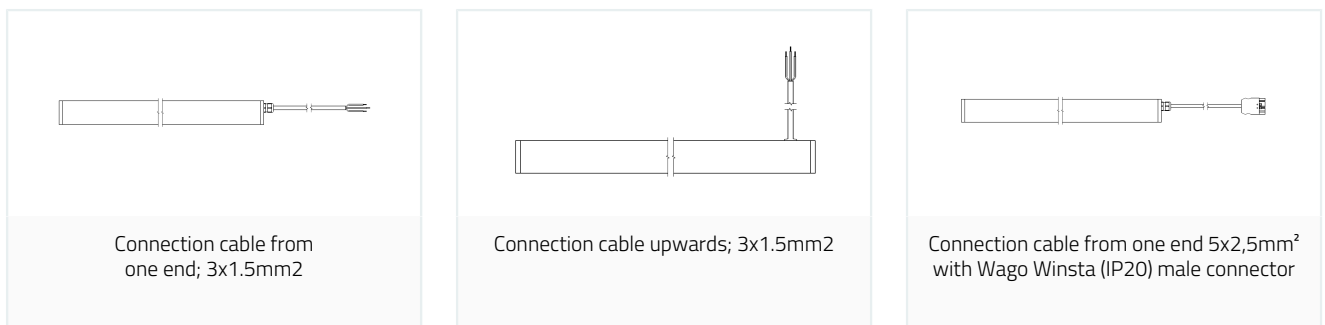
Classifications

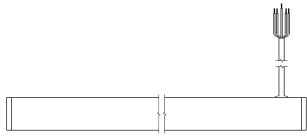


Optics

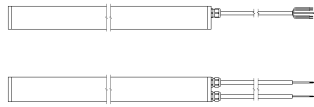


Connections





Connection cable upwards 5x2,5mm² with Wago Winsta (IP20) male connector



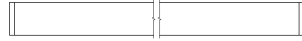
Through-wiring 5x2,5mm² at the same end



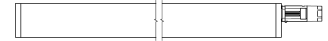
Through-wiring 5x2,5mm² with connection cables



Through-wiring 5x2,5mm² with Wago Winsta male connector, other end with an integrated female connector.



Through-wiring 5x2,5mm² with Wago Winsta intermediate cable, ends with integrated male and female connectors



Phoenix IPD quick connector at the end, max. 5x2.5mm², no cable



Through-wiring 5x2,5mm², Phoenix IPD connectors at both ends, no cable



Through-wiring 5x2.5mm² connection cable at one end, Phoenix IPD quick connector at the other end



Connection cable from one end; 3x1.5mm² with Schuko plug connector



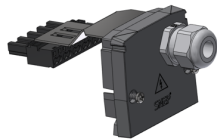
Connection cable from one end; 3x1.5mm² with 3-phase adapter



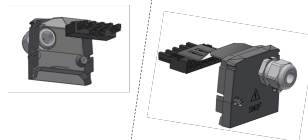
LCS-quick connector at the end, max. 5x2.5mm², no cable



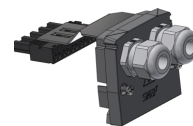
Through-wiring 5x2,5mm², LCS-quick connectors at both ends, no cable



Connection end cap at the end of the luminaire, supports max 5x2.5mm² cable. No connection cable included.



Through cabling through the connection end caps, supports max 5x2.5mm² cable. No connection cables included.



Through cabling from the same end cap, supports max 5x2.5mm² cable. No connection cables included.

Luminaires

Luminaires	CRI	CCT	Optics	Length	Width	Height	Weight
SNEP® MODE C	CRI > 80	4000K	W90	1140mm	70mm	65mm	2,5kg

Item	Technical name	lm**	W**	lm/W**	Ta	Taind	Lifetime	Failure rate
C04 W90	840HE 23W	3800	23	165	-25...+50°C	-40...+50°C	L80B50 > 100 000h	100 000h / 10%
C04 W90	840HE 26W	4250	26	163	-25...+50°C	-40...+50°C	L80B50 > 100 000h	100 000h / 10%
C04 W90	840HE 29W	4750	29	164	-25...+50°C	-40...+50°C	L80B50 > 100 000h	100 000h / 10%
C04 W90	840HE 32W	5200	32	163	-25...+50°C	-40...+50°C	L80B50 > 100 000h	100 000h / 10%
C04 W90	840HE 35W	5650	35	161	-25...+50°C	-40...+50°C	L80B50 > 100 000h	100 000h / 10%
C04 W90	840HO 38W	6000	38	158	-25...+45°C	-40...+45°C	L80B50 > 100 000h	100 000h / 10%
C04 W90	840HO 40W	6350	40	159	-25...+45°C	-40...+45°C	L80B50 > 100 000h	100 000h / 10%
C04 W90	840HO 45W	7050	45	157	-25...+45°C	-40...+45°C	L80B50 > 100 000h	100 000h / 10%
C04 W90	840HO 50W	7800	50	156	-25...+45°C	-40...+45°C	L80B50 > 100 000h	100 000h / 10%
C04 W90	840HO 55W	8450	55	154	-25...+45°C	-40...+45°C	L80B50 > 100 000h	100 000h / 10%
C04 W90	840HO 60W	9150	60	153	-25...+45°C	-40...+45°C	L80B50 = 100 000h	100 000h / 10%
C04 W90	840HO 69W	10150	69	147	-25...+40°C	-40...+40°C	L80B50 = 100 000h	100 000h / 10%

Luminaires	CRI	CCT	Optics	Length	Width	Height	Weight
SNEP® MODE C	CRI > 80	4000K	W90	1700mm	70mm	65mm	3,6kg

Item	Technical name	lm**	W**	lm/W**	Ta	Taind	Lifetime	Failure rate
C06 W90	840HE 33W	5700	33	173	-25...+50°C	-40...+50°C	L80B50 > 100 000h	100 000h / 10%
C06 W90	840HE 37W	6400	37	173	-25...+50°C	-40...+50°C	L80B50 > 100 000h	100 000h / 10%
C06 W90	840HE 42W	7100	42	169	-25...+50°C	-40...+50°C	L80B50 > 100 000h	100 000h / 10%
C06 W90	840HE 47W	7750	47	165	-25...+50°C	-40...+50°C	L80B50 > 100 000h	100 000h / 10%
C06 W90	840HE 51W	8450	51	166	-25...+50°C	-40...+50°C	L80B50 > 100 000h	100 000h / 10%
C06 W90	840HO 55W	9000	55	164	-25...+45°C	-40...+45°C	L80B50 > 100 000h	100 000h / 10%
C06 W90	840HO 59W	9500	59	161	-25...+45°C	-40...+45°C	L80B50 > 100 000h	100 000h / 10%
C06 W90	840HO 67W	10600	67	158	-25...+45°C	-40...+45°C	L80B50 > 100 000h	100 000h / 10%
C06 W90	840HO 74W	11650	74	157	-25...+45°C	-40...+45°C	L80B50 > 100 000h	100 000h / 10%
C06 W90	840HO 82W	12700	82	155	-25...+45°C	-40...+45°C	L80B50 > 100 000h	100 000h / 10%
C06 W90	840HO 89W	13700	89	154	-25...+45°C	-40...+45°C	L80B50 > 100 000h	100 000h / 10%
C06 W90	840HO1 103W	15250	103	148	-25...+40°C	-40...+40°C	L80B50 = 100 000h	100 000h / 10%

Luminaire	CRI	CCT	Optics	Length	Width	Height	Weight
SNEP® MODE C	CRI > 80	4000K	W90	2260mm	70mm	65mm	4,9kg

Item	Technical name	lm**	W**	lm/W**	Ta	Taind	Lifetime	Failure rate
C08 W90	840HE 44W	7600	44	173	-25...+50°C	-40...+50°C	L80B50 > 100 000h	100 000h / 10%
C08 W90	840HE 49W	8500	49	173	-25...+50°C	-40...+50°C	L80B50 > 100 000h	100 000h / 10%
C08 W90	840HE 55W	9450	55	172	-25...+50°C	-40...+50°C	L80B50 > 100 000h	100 000h / 10%
C08 W90	840HE 62W	10350	62	167	-25...+50°C	-40...+50°C	L80B50 > 100 000h	100 000h / 10%
C08 W90	840HE 68W	11250	68	165	-25...+50°C	-40...+50°C	L80B50 > 100 000h	100 000h / 10%
C08 W90	840HO1 73W	12000	73	164	-25...+45°C	-40...+45°C	L80B50 > 100 000h	100 000h / 10%
C08 W90	840HO1 78W	12700	78	163	-25...+45°C	-40...+45°C	L80B50 > 100 000h	100 000h / 10%
C08 W90	840HO1 88W	14150	88	161	-25...+45°C	-40...+45°C	L80B50 > 100 000h	100 000h / 10%
C08 W90	840HO1 98W	15550	98	159	-25...+45°C	-40...+45°C	L80B50 > 100 000h	100 000h / 10%
C08 W90	840HO2 108W	16950	108	157	-25...+45°C	-40...+45°C	L80B50 > 100 000h	100 000h / 10%
C08 W90	840HO2 118W	18300	118	155	-25...+45°C	-40...+45°C	L80B50 = 100 000h	100 000h / 10%
C08 W90	840HO2 137W	20350	137	149	-25...+40°C	-40...+40°C	L80B50 = 100 000h	100 000h / 10%

Luminaire	CRI	CCT	Optics	Length	Width	Height	Weight
SNEP® MODE C	CRI > 80	4000K	W90	2820mm	70mm	65mm	6,1kg

Item	Technical name	lm**	W**	lm/W**	Ta	Taind	Lifetime	Failure rate
C10 W90	840HE 54W	9500	54	176	-25...+50°C	-40...+50°C	L80B50 > 100 000h	100 000h / 10%
C10 W90	840HE 62W	10650	62	172	-25...+50°C	-40...+50°C	L80B50 > 100 000h	100 000h / 10%
C10 W90	840HE 69W	11800	69	171	-25...+50°C	-40...+50°C	L80B50 > 100 000h	100 000h / 10%
C10 W90	840HE 76W	12950	76	170	-25...+50°C	-40...+50°C	L80B50 > 100 000h	100 000h / 10%
C10 W90	840HO 85W	14050	85	165	-25...+45°C	-40...+45°C	L80B50 > 100 000h	100 000h / 10%
C10 W90	840HO 91W	15000	91	165	-25...+45°C	-40...+45°C	L80B50 > 100 000h	100 000h / 10%
C10 W90	840HO 97W	15850	97	163	-25...+45°C	-40...+45°C	L80B50 > 100 000h	100 000h / 10%
C10 W90	840HO 110W	17650	110	160	-25...+45°C	-40...+45°C	L80B50 > 100 000h	100 000h / 10%
C10 W90	840HO 122W	19450	122	159	-25...+45°C	-40...+45°C	L80B50 > 100 000h	100 000h / 10%
C10 W90	840HO 135W	21150	135	157	-25...+45°C	-40...+45°C	L80B50 > 100 000h	100 000h / 10%
C10 W90	840HO 147W	22850	147	155	-25...+45°C	-40...+45°C	L80B50 > 100 000h	100 000h / 10%
C10 W90	840HO1 160W	24200	160	151	-25...+40°C	-40...+40°C	L80B50 > 100 000h	100 000h / 10%
C10 W90	840HO1 171W	25350	171	148	-25...+40°C	-40...+40°C	L80B50 > 100 000h	100 000h / 10%

Luminaires	CRI	CCT	Optics	Length	Width	Height	Weight
SNEP® MODE C	CRI > 80	4000K	T90	1140mm	70mm	65mm	2,5kg

Item	Technical name	lm**	W**	lm/W**	Ta	Taind	Lifetime	Failure rate
C04 T90	840XO 68W	10500	68	154	-25...+45°C	-40...+45°C	L80B50 > 100 000h	100 000h / 10%
C04 T90	840XO 79W	12000	79	152	-25...+45°C	-40...+45°C	L80B50 > 100 000h	100 000h / 10%
C04 T90	840XO 90W	13450	90	149	-25...+45°C	-40...+45°C	L80B50 > 100 000h	100 000h / 10%
C04 T90	840XO 101W	14900	101	148	-25...+45°C	-40...+45°C	L80B50 > 100 000h	100 000h / 10%
C04 T90	840XP 116W	16300	116	141	-25...+40°C	-40...+40°C	L80B50 > 100 000h	101 000h / 10%

Luminaires	CRI	CCT	Optics	Length	Width	Height	Weight
SNEP® MODE C	CRI > 80	4000K	T90	1700mm	70mm	65mm	3,6kg

Luminaires	CRI	CCT	Optics	Length	Width	Height	Weight
SNEP® MODE C	CRI > 80	4000K	T90	1700mm	70mm	65mm	3,6kg

Item	Technical name	lm**	W**	lm/W**	Ta	Taind	Lifetime	Failure rate
C06 T90	840XO 102W	15750	102	154	-25...+45°C	-40...+45°C	L80B50 > 100 000h	100 000h / 10%
Item	Technical name	lm**	W**	lm/W**	Ta	Taind	Lifetime	Failure rate
C06 T90	840XO 102W	15750	102	154	-25...+45°C	-40...+45°C	L80B50 > 100 000h	100 000h / 10%
C06 T90	840XO 118W	17950	118	152	-25...+45°C	-40...+45°C	L80B50 > 100 000h	100 000h / 10%
C06 T90	840XO 118W	17950	118	152	-25...+45°C	-40...+45°C	L80B50 > 100 000h	100 000h / 10%
C06 T90	840XO 135W	20150	135	149	-25...+45°C	-40...+45°C	L80B50 > 100 000h	100 000h / 10%
C06 T90	840XO 135W	20150	135	149	-25...+45°C	-40...+45°C	L80B50 > 100 000h	100 000h / 10%
C06 T90	840XO 152W	22300	152	147	-25...+45°C	-40...+45°C	L80B50 > 100 000h	100 000h / 10%
C06 T90	840XO 152W	22300	152	147	-25...+45°C	-40...+45°C	L80B50 > 100 000h	100 000h / 10%
C06 T90	840XP 171W	24450	171	143	-25...+40°C	-40...+40°C	L80B50 > 100 000h	101 000h / 10%
C06 T90	840XP 171W	24450	171	143	-25...+40°C	-40...+40°C	L80B50 > 100 000h	101 000h / 10%

Luminaires	CRI	CCT	Optics	Length	Width	Height	Weight
SNEP® MODE C	CRI > 80	4000K	T90	2260mm	70mm	65mm	4,9kg

Luminaires	CRI	CCT	Optics	Length	Width	Height	Weight
SNEP® MODE C	CRI > 80	4000K	T90	2260mm	70mm	65mm	4,9kg

Item	Technical name	lm**	W**	lm/W**	Ta	Taind	Lifetime	Failure rate
C08 T90	840XO 136W	20950	136	154	-25...+45°C	-40...+45°C	L80B50 > 100 000h	100 000h / 10%

Item	Technical name	lm**	W**	lm/W**	Ta	Taind	Lifetime	Failure rate
C08 T90	840X0 136W	20950	136	154	-25...+45°C	-40...+45°C	L80B50 > 100 000h	100 000h / 10%
C08 T90	840X0 155W	23550	155	152	-25...+45°C	-40...+45°C	L80B50 > 100 000h	100 000h / 10%
C08 T90	840X0 155W	23550	155	152	-25...+45°C	-40...+45°C	L80B50 > 100 000h	100 000h / 10%
C08 T90	840XP 173W	25900	173	150	-25...+40°C	-40...+40°C	L80B50 > 100 000h	101 000h / 10%
C08 T90	840XP 173W	25900	173	150	-25...+40°C	-40...+40°C	L80B50 > 100 000h	101 000h / 10%
C08 T90	840X02 180W	26850	180	149	-25...+45°C	-40...+45°C	L80B50 > 100 000h	100 000h / 10%
C08 T90	840X02 203W	29700	203	146	-25...+45°C	-40...+45°C	L80B50 > 100 000h	100 000h / 10%

Luminaires	CRI	CCT	Optics	Length	Width	Height	Weight
SNEP® MODE C	CRI > 80	4000K	T90	2820mm	70mm	65mm	6,6kg

Item	Technical name	lm**	W**	lm/W**	Ta	Taind	Lifetime	Failure rate
C10 T90	840X02 169W	26250	169	155	-25...+45°C	-40...+45°C	L80B50 > 100 000h	100 000h / 10%
C10 T90	840X02 193W	29450	193	153	-25...+45°C	-40...+45°C	L80B50 > 100 000h	100 000h / 10%
C10 T90	840X02 225W	33550	225	149	-25...+45°C	-40...+45°C	L80B50 > 100 000h	100 000h / 10%
C10 T90	840X02 253W	37200	253	147	-25...+45°C	-40...+45°C	L80B50 > 100 000h	100 000h / 10%

Luminaires	CRI	CCT	Optics	Length	Width	Height	Weight
SNEP® MODE C	CRI > 90	4000K	W90	1140mm	70mm	65mm	2,5kg

Item	Technical name	lm**	W**	lm/W**	Ta	Taind	Lifetime	Failure rate
C04 W90	940HE 23W	3450	23	150	-25...+45°C	-40...+45°C	L80B50 > 100 000h	100 000h / 10%
C04 W90	940HE 26W	3900	26	150	-25...+45°C	-40...+45°C	L80B50 > 100 000h	100 000h / 10%
C04 W90	940HE 29W	4300	29	148	-25...+45°C	-40...+45°C	L80B50 > 100 000h	100 000h / 10%
C04 W90	940HE 32W	4750	32	148	-25...+45°C	-40...+45°C	L80B50 > 100 000h	100 000h / 10%
C04 W90	940HE 35W	5150	35	147	-25...+45°C	-40...+45°C	L80B50 > 100 000h	100 000h / 10%
C04 W90	940HO 38W	5450	38	143	-25...+40°C	-40...+40°C	L80B50 > 100 000h	100 000h / 10%
C04 W90	940HO 40W	5800	40	145	-25...+40°C	-40...+40°C	L80B50 > 100 000h	100 000h / 10%
C04 W90	940HO 45W	6450	45	143	-25...+40°C	-40...+40°C	L80B50 > 100 000h	100 000h / 10%
C04 W90	940HO 50W	7100	50	142	-25...+40°C	-40...+40°C	L80B50 > 100 000h	100 000h / 10%
C04 W90	940HO 55W	7700	55	140	-25...+40°C	-40...+40°C	L80B50 > 100 000h	100 000h / 10%
C04 W90	940HO 60W	8350	60	139	-25...+40°C	-40...+40°C	L80B50 = 100 000h	100 000h / 10%

Luminaires	CRI	CCT	Optics	Length	Width	Height	Weight
SNEP® MODE C	CRI > 90	4000K	W90	1700mm	70mm	65mm	3,6kg

Item	Technical name	lm**	W**	lm/W**	Ta	Taind	Lifetime	Failure rate
C06 W90	940HE 33W	5200	33	158	-25...+45°C	-40...+45°C	L80B50 > 100 000h	100 000h / 10%
C06 W90	940HE 37W	5850	37	158	-25...+45°C	-40...+45°C	L80B50 > 100 000h	100 000h / 10%
C06 W90	940HE 42W	6450	42	154	-25...+45°C	-40...+45°C	L80B50 > 100 000h	100 000h / 10%
C06 W90	940HE 47W	7100	47	151	-25...+45°C	-40...+45°C	L80B50 > 100 000h	100 000h / 10%
C06 W90	940HE 51W	7700	51	151	-25...+45°C	-40...+45°C	L80B50 > 100 000h	100 000h / 10%
C06 W90	940HO 55W	8200	55	149	-25...+40°C	-40...+40°C	L80B50 > 100 000h	100 000h / 10%
C06 W90	940HO 59W	8700	59	147	-25...+40°C	-40...+40°C	L80B50 > 100 000h	100 000h / 10%
C06 W90	940HO 67W	9650	67	144	-25...+40°C	-40...+40°C	L80B50 > 100 000h	100 000h / 10%
C06 W90	940HO 74W	10650	74	144	-25...+40°C	-40...+40°C	L80B50 > 100 000h	100 000h / 10%
C06 W90	940HO 82W	11600	82	141	-25...+40°C	-40...+40°C	L80B50 > 100 000h	100 000h / 10%
C06 W90	940HO 89W	12500	89	140	-25...+40°C	-40...+40°C	L80B50 > 100 000h	100 000h / 10%

Luminaires	CRI	CCT	Optics	Length	Width	Height	Weight
SNEP® MODE C	CRI > 90	4000K	W90	2260mm	70mm	65mm	4,9kg

Item	Technical name	lm**	W**	lm/W**	Ta	Taind	Lifetime	Failure rate
C08 W90	940HE 44W	6900	44	157	-25...+45°C	-40...+45°C	L80B50 > 100 000h	100 000h / 10%
C08 W90	940HE 49W	7750	49	158	-25...+45°C	-40...+45°C	L80B50 > 100 000h	100 000h / 10%
C08 W90	940HE 55W	8600	55	156	-25...+45°C	-40...+45°C	L80B50 > 100 000h	100 000h / 10%
C08 W90	940HE 62W	9450	62	152	-25...+45°C	-40...+45°C	L80B50 > 100 000h	100 000h / 10%
C08 W90	940HE 68W	10250	68	151	-25...+45°C	-40...+45°C	L80B50 > 100 000h	100 000h / 10%
C08 W90	940HO1 73W	10950	73	150	-25...+40°C	-40...+40°C	L80B50 > 100 000h	100 000h / 10%
C08 W90	940HO1 78W	11600	78	149	-25...+40°C	-40...+40°C	L80B50 > 100 000h	100 000h / 10%
C08 W90	940HO1 88W	12900	88	147	-25...+40°C	-40...+40°C	L80B50 > 100 000h	100 000h / 10%
C08 W90	940HO1 98W	14200	98	145	-25...+40°C	-40...+40°C	L80B50 > 100 000h	100 000h / 10%
C08 W90	940HO2 108W	15450	108	143	-25...+40°C	-40...+40°C	L80B50 > 100 000h	100 000h / 10%
C08 W90	940HO2 118W	16700	118	142	-25...+40°C	-40...+40°C	L80B50 = 100 000h	100 000h / 10%

Luminaires	CRI	CCT	Optics	Length	Width	Height	Weight
SNEP® MODE C	CRI > 90	4000K	W90	2820mm	70mm	65mm	6,1kg

Item	Technical name	lm**	W**	lm/W**	Ta	Taind	Lifetime	Failure rate
C10 W90	940HE 54W	8650	54	160	-25...+45°C	-40...+45°C	L80B50 > 100 000h	100 000h / 10%
C10 W90	940HE 62W	9700	62	156	-25...+45°C	-40...+45°C	L80B50 > 100 000h	100 000h / 10%
C10 W90	940HE 69W	10800	69	157	-25...+45°C	-40...+45°C	L80B50 > 100 000h	100 000h / 10%
C10 W90	940HE 76W	11800	76	155	-25...+45°C	-40...+45°C	L80B50 > 100 000h	100 000h / 10%
C10 W90	940HO 85W	12850	85	151	-25...+45°C	-40...+45°C	L80B50 > 100 000h	100 000h / 10%
C10 W90	940HO 91W	13700	91	151	-25...+40°C	-40...+40°C	L80B50 > 100 000h	100 000h / 10%
C10 W90	940HO 97W	14450	97	149	-25...+40°C	-40...+40°C	L80B50 > 100 000h	100 000h / 10%
C10 W90	940HO 110W	16100	110	146	-25...+40°C	-40...+40°C	L80B50 > 100 000h	100 000h / 10%
C10 W90	940HO 147W	20850	147	142	-25...+40°C	-40...+40°C	L80B50 > 100 000h	100 000h / 10%

*Values are given in normal ambient temperature +25°C
 For non condensing environment or use
 Through cabling length tolerance from the luminaire ends ±10%
 Input power tolerance is ±5% and light output tolerance is ±7%