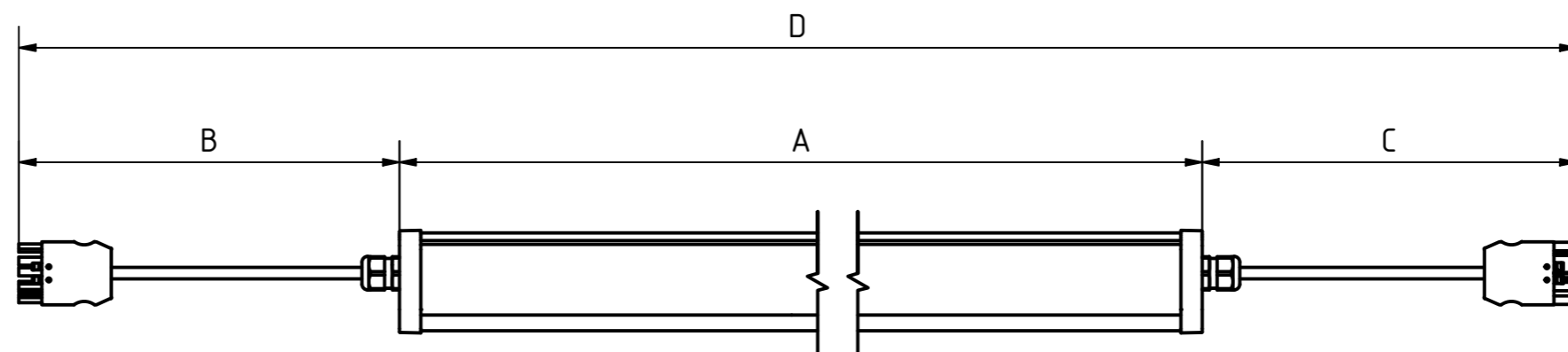


Läpjohtotus Wago Winsta liitoskaapeleilla
Through wiring with Wago Winsta connector
Genomgående kabeldragning med Wago Winsta kontakt
Durchangsverdrahtung mit Wago Winsta Stecker



Wago Winsta Mini 771
FEMALE connector
(5x2,5mm²)

Wago Winsta Mini 771
MALE connector
(5x2,5mm²)

-2W2W- Cable 2+2m			
LUMINAIRE (A)	CABLE (B)	CABLE (C)	TOTAL LENGTH (D)
1144	1950	906	4000
1423	1950	627	4000

-2W3W- Cable 2+3m			
LUMINAIRE (A)	CABLE (B)	CABLE (C)	TOTAL LENGTH (D)
1144	1950	1906	5000
1423	1950	1627	5000
2262	1950	788	5000

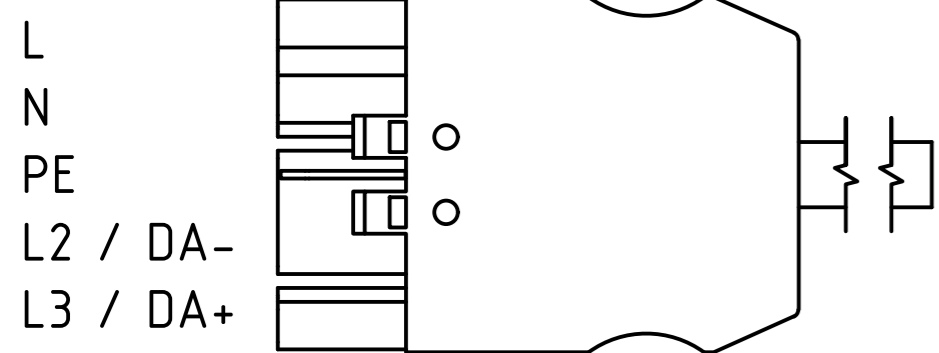
-2W4W- Cable 2+4m			
LUMINAIRE (A)	CABLE (B)	CABLE (C)	TOTAL LENGTH (D)
1144	1950	2906	6000
1423	1950	2627	6000
2262	1950	1788	6000

-2W5W- Cable 2+5m			
LUMINAIRE (A)	CABLE (B)	CABLE (C)	TOTAL LENGTH (D)
1144	1950	3906	7000
1423	1950	3627	7000
2262	1950	2788	7000

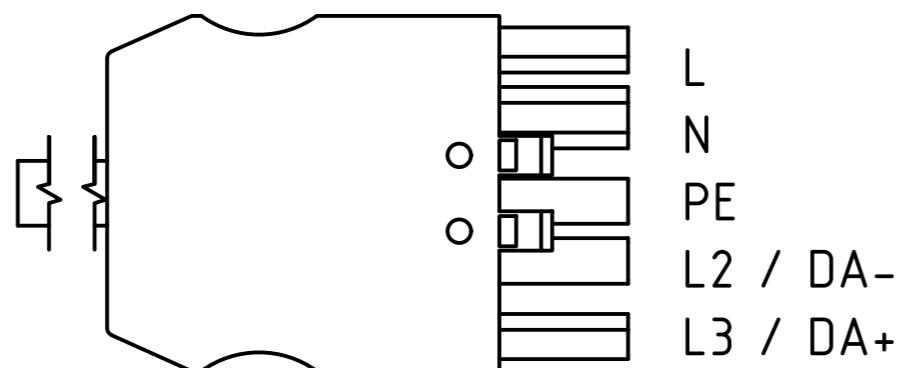
-2W6W- Cable 2+6m			
LUMINAIRE (A)	CABLE (B)	CABLE (C)	TOTAL LENGTH (D)
1144	1950	4906	8000
1423	1950	4627	8000
2262	1950	3788	8000

-2W8W- Cable 2+8m			
LUMINAIRE (A)	CABLE (B)	CABLE (C)	TOTAL LENGTH (D)
1144	1950	5906	10000
1423	1950	5627	10000
2262	1950	4788	10000

Pituus (D) toleranssi ±0,1m
The stated length (D) tolerance ±0,1m



Wago Winsta Mini 771
MALE connector
(5x2,5mm²)



Wago Winsta Mini 771
FEMALE connector
(5x2,5mm²)

(Ruskea/Brown/Brun/Braun)
 (Sininen/Blue/Blå/Blau)
 (Keltavihreä/Yellow-Green/Gul-Grön/Grüngelb)
 (Musta/Black/Svart/Schwarz)
 (Harmaa/Grey/Grå/Grau)

Cables		
Code	Description	Cable type
-2W2W-	5x2,5mm ² , 2m 5x2,5mm ² , 2m	H05VV-F
-2W3W-	5x2,5mm ² , 2m 5x2,5mm ² , 3m	H05VV-F
-2W4W-	5x2,5mm ² , 2m 5x2,5mm ² , 4m	H05VV-F
-2W5W-	5x2,5mm ² , 2m 5x2,5mm ² , 5m	H05VV-F
-2W6W-	5x2,5mm ² , 2m 5x2,5mm ² , 6m	H05VV-F
-2W8W-	5x2,5mm ² , 2m 5x2,5mm ² , 8m	H05VV-F
-2W2W-HF	5x2,5mm ² , 2m 5x2,5mm ² , 2m	H05Z1Z1-F
-2W3W-HF	5x2,5mm ² , 2m 5x2,5mm ² , 3m	H05Z1Z1-F
-2W4W-HF	5x2,5mm ² , 2m 5x2,5mm ² , 4m	H05Z1Z1-F
-2W5W-HF	5x2,5mm ² , 2m 5x2,5mm ² , 5m	H05Z1Z1-F
-2W6W-HF	5x2,5mm ² , 2m 5x2,5mm ² , 6m	H05Z1Z1-F
-2W8W-HF	5x2,5mm ² , 2m 5x2,5mm ² , 8m	H05Z1Z1-F
-2W2W-DA	5x2,5mm ² , 2m 5x2,5mm ² , 2m	H05VV-F
-2W3W-DA	5x2,5mm ² , 2m 5x2,5mm ² , 3m	H05VV-F
-2W4W-DA	5x2,5mm ² , 2m 5x2,5mm ² , 4m	H05VV-F
-2W5W-DA	5x2,5mm ² , 2m 5x2,5mm ² , 5m	H05VV-F
-2W6W-DA	5x2,5mm ² , 2m 5x2,5mm ² , 6m	H05VV-F
-2W8W-DA	5x2,5mm ² , 2m 5x2,5mm ² , 8m	H05VV-F
-2W2W-HFDA	5x2,5mm ² , 2m 5x2,5mm ² , 2m	H05Z1Z1-F
-2W3W-HFDA	5x2,5mm ² , 2m 5x2,5mm ² , 3m	H05Z1Z1-F
-2W4W-HFDA	5x2,5mm ² , 2m 5x2,5mm ² , 4m	H05Z1Z1-F
-2W5W-HFDA	5x2,5mm ² , 2m 5x2,5mm ² , 5m	H05Z1Z1-F
-2W6W-HFDA	5x2,5mm ² , 2m 5x2,5mm ² , 6m	H05Z1Z1-F
-2W8W-HFDA	5x2,5mm ² , 2m 5x2,5mm ² , 8m	H05Z1Z1-F

Cable insulation options	Code
MSK / PVC / H05VV-F	
MSK / PVC / H05VV-F	DA
MSK / HF / H05Z1Z1-F	HF / HFDA
VSN / VSKB / H07RN-F	R / RDA
VSN / VSKB / H07ZZ-F	RHF / RHFDA

HUOM!
Pituus (D) on maksimimitta, jonka kullakin kaapeliparilla voi saavuttaa.
On suositeltavaa jättää tarvittava pelivara asennukselle (esim. jos kaapelia täytyy taivutella, kiertää esteitä tms.).

Esimerkkejä kaapelivalinnoista:
Examples of cable codes:
-2W1W- (Cable 2m+1m, H05VV-F, PVC)
-2W5W- HF (Cable 2m+5m, H05Z1Z1-F, halogen-free)

ATTENTION! Length (D) is the absolut maximum through-wiring distance.
It is advised to leave some leeway for assembling (e.g. if the cable needs to be bend etc.).