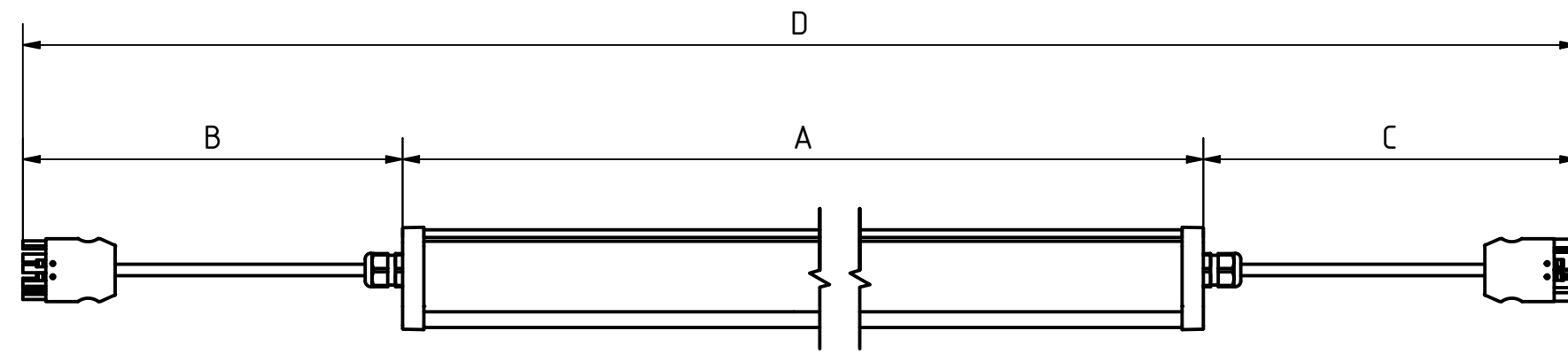


Läpipohtaus Wago Winsta liitoskaapeleilla
Through wiring with Wago Winsta connector
Genomgående kabeldragning med Wago Winsta kontakt
Durchangsverdrahtung mit Wago Winsta Stecker



Wago Winsta Mini 771
FEMALE connector
(5x2,5mm²)

Wago Winsta Mini 771
MALE connector
(5x2,5mm²)

-2W2W- Cable 2+2m			
LUMINAIRE (A)	CABLE (B)	CABLE (C)	TOTAL LENGTH (D)
576	1950	1474	4000
1136	1950	914	4000
1416	1950	634	4000

-2W3W- Cable 2+3m			
LUMINAIRE (A)	CABLE (B)	CABLE (C)	TOTAL LENGTH (D)
576	1950	2474	5000
1136	1950	1914	5000
1416	1950	1634	5000
1696	1950	1354	5000
2256	1950	794	5000

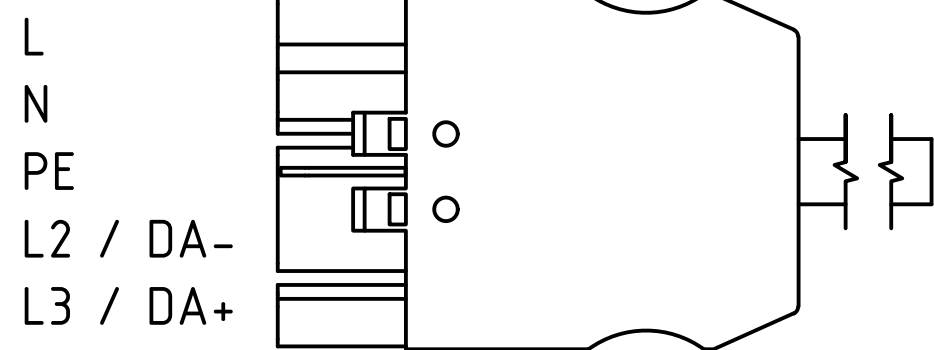
-2W4W- Cable 2+4m			
LUMINAIRE (A)	CABLE (B)	CABLE (C)	TOTAL LENGTH (D)
576	1950	3474	6000
1136	1950	2914	6000
1416	1950	2634	6000
1696	1950	2354	6000
2256	1950	1974	6000

-2W5W- Cable 2+5m			
LUMINAIRE (A)	CABLE (B)	CABLE (C)	TOTAL LENGTH (D)
576	1950	4474	7000
1136	1950	3914	7000
1416	1950	3634	7000
1696	1950	3354	7000
2256	1950	2794	7000

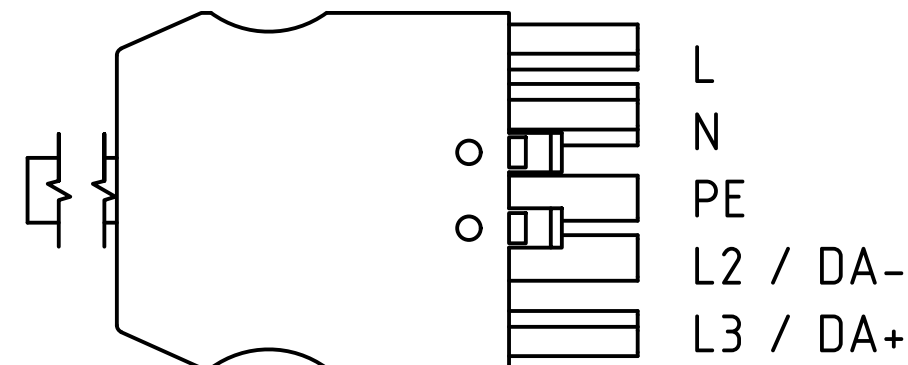
-2W6W- Cable 2+6m			
LUMINAIRE (A)	CABLE (B)	CABLE (C)	TOTAL LENGTH (D)
576	1950	5474	8000
1136	1950	4914	8000
1416	1950	4634	8000
1696	1950	4354	8000
2256	1950	3794	8000

-2W8W- Cable 2+8m			
LUMINAIRE (A)	CABLE (B)	CABLE (C)	TOTAL LENGTH (D)
576	1950	7474	10000
1136	1950	6914	10000
1416	1950	6634	10000
1696	1950	6354	10000
2256	1950	5794	10000

Pituus (D) toleranssi ±0,1m
The stated length (D) tolerance ±0,1m



Wago Winsta Mini 771
MALE connector
(5x2,5mm²)



Wago Winsta Mini 771
FEMALE connector
(5x2,5mm²)

(Ruskea/Brown/Brun/Braun)
 (Sininen/Blue/Blå/Blau)
 (Keltavihreä/Yellow-Green/Gul-Grön/Grünelb)
 (Musta/Black/Svart/Schwarz)
 (Harmaa/Grey/Grå/Grau)

Cables		
Code	Description	Cable type
-2W2W-	5x2,5mm ² , 2m 5x2,5mm ² , 2m	H05VV-F
-2W3W-	5x2,5mm ² , 2m 5x2,5mm ² , 3m	H05VV-F
-2W4W-	5x2,5mm ² , 2m 5x2,5mm ² , 4m	H05VV-F
-2W5W-	5x2,5mm ² , 2m 5x2,5mm ² , 5m	H05VV-F
-2W6W-	5x2,5mm ² , 2m 5x2,5mm ² , 6m	H05VV-F
-2W8W-	5x2,5mm ² , 2m 5x2,5mm ² , 8m	H05VV-F
-2W2W-HF	5x2,5mm ² , 2m 5x2,5mm ² , 2m	H05Z1Z1-F
-2W3W-HF	5x2,5mm ² , 2m 5x2,5mm ² , 3m	H05Z1Z1-F
-2W4W-HF	5x2,5mm ² , 2m 5x2,5mm ² , 4m	H05Z1Z1-F
-2W5W-HF	5x2,5mm ² , 2m 5x2,5mm ² , 5m	H05Z1Z1-F
-2W6W-HF	5x2,5mm ² , 2m 5x2,5mm ² , 6m	H05Z1Z1-F
-2W8W-HF	5x2,5mm ² , 2m 5x2,5mm ² , 8m	H05Z1Z1-F
-2W2W-DA	5x2,5mm ² , 2m 5x2,5mm ² , 2m	H05VV-F
-2W3W-DA	5x2,5mm ² , 2m 5x2,5mm ² , 3m	H05VV-F
-2W4W-DA	5x2,5mm ² , 2m 5x2,5mm ² , 4m	H05VV-F
-2W5W-DA	5x2,5mm ² , 2m 5x2,5mm ² , 5m	H05VV-F
-2W6W-DA	5x2,5mm ² , 2m 5x2,5mm ² , 6m	H05VV-F
-2W8W-DA	5x2,5mm ² , 2m 5x2,5mm ² , 8m	H05VV-F
-2W2W-HFDA	5x2,5mm ² , 2m 5x2,5mm ² , 2m	H05Z1Z1-F
-2W3W-HFDA	5x2,5mm ² , 2m 5x2,5mm ² , 3m	H05Z1Z1-F
-2W4W-HFDA	5x2,5mm ² , 2m 5x2,5mm ² , 4m	H05Z1Z1-F
-2W5W-HFDA	5x2,5mm ² , 2m 5x2,5mm ² , 5m	H05Z1Z1-F
-2W6W-HFDA	5x2,5mm ² , 2m 5x2,5mm ² , 6m	H05Z1Z1-F
-2W8W-HFDA	5x2,5mm ² , 2m 5x2,5mm ² , 8m	H05Z1Z1-F

Cable insulation options	Code
MSK / PVC / H05VV-F	
MSK / PVC / H05VV-F	DA
MSK / HF / H05Z1Z1-F	HF / HFDA
VSN / VSKB / H07RN-F	R / RDA
VSN / VSKB / H07ZZ-F	RHF / RHFDA

HUOM!
Pituus (D) on maksimimitta, jonka kullakin kaapeliparilla voi saavuttaa.
On suositeltavaa jättää tarvittava pelivara asennukselle (esim. jos kaapelia täytyy faivutella, kiertää esteitä tmv.).

ATTENTION! Length (D) is the absolut maximum through-wiring distance.
It is advised to leave some leeway for assembling (e.g. if the cable needs to be bend etc.).

Esimerkkejä kaapelivalinnoista:
Examples of cable codes:
-2W1W- (Cable 2m+1m, H05VV-F, PVC)
-2W5W- HF (Cable 2m+5m, H05Z1Z1-F, halogen-free)