

2024-11



PursoCal

News-Letter

DataBase-3344
V12



- P50L EI30/EI60, with options inside fire, outside or inside and outside:

Favourites: Without

System: Purso P50L EI30/60 (B)

Subsystem: EI30

Rule Package: EI30

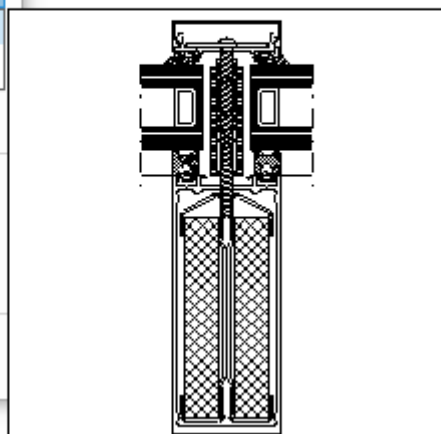
System Preference: EI60

Settings for CE declaration and U values

CE declaration and U values according to curtain wall standard (EN 13830)

CE declaration and U values according to window standard (EN 14351)

OK Cancel



- P80 glass walls for Finnish customers.

System: Purso P80 E

Subsystem:

Rule Package: P80 EI20 - Glass walls

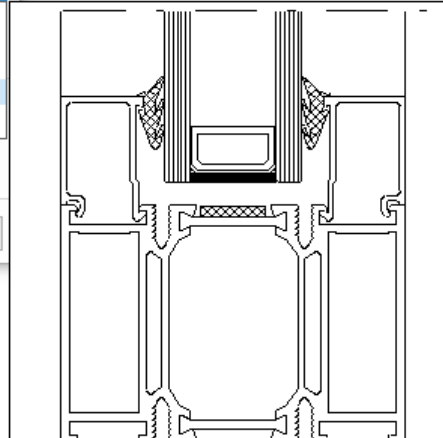
System Preference: P80 E30 - Doors
P80 EI30 - Doors
P80 EI60 - Doors
P80 EI20 - Glass walls
P80 EI30 - Glass walls

Settings for CE declaration

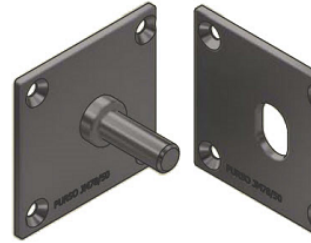
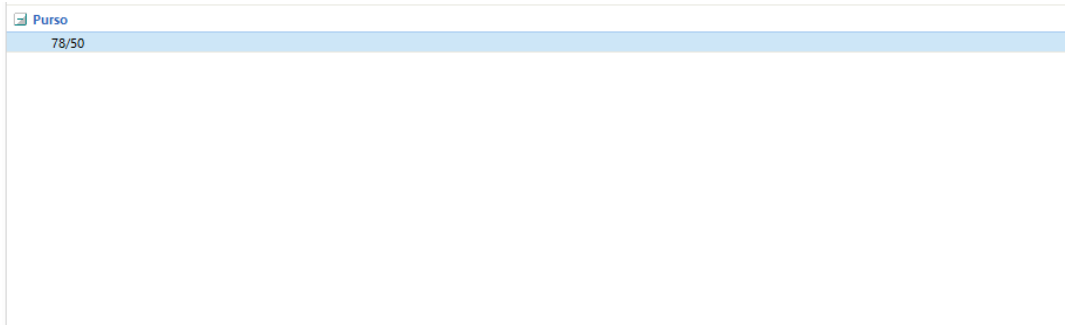
CE declaration and U values according to curtain wall standard (EN 13830)

CE declaration and U values according to window standard (EN 14351)

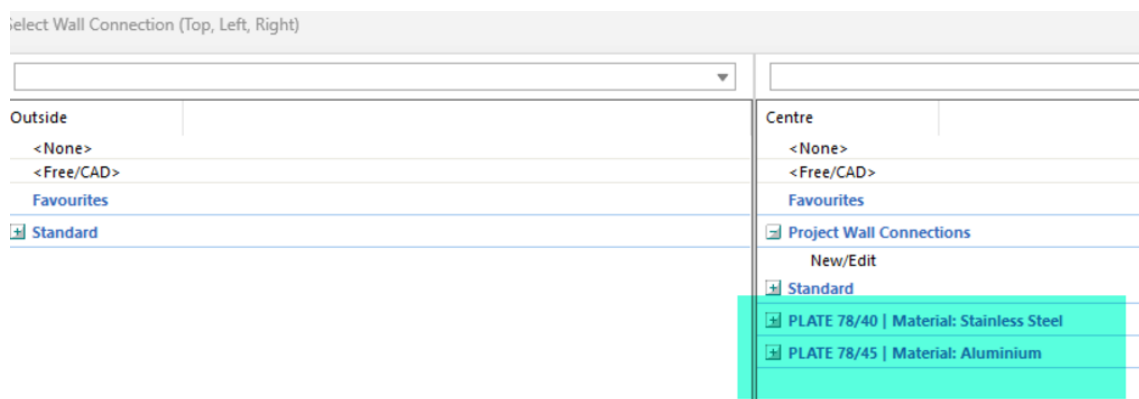
OK Cancel



- LK78X security pins updated



- LK78X – wall fixation, material description added for plates:



- Terrace midrail brush gasket changed from HT1 to JTHT5.
- Added adjufix machining for P94.
- Updated descriptions for Hardwares and accessories that is not supplied by Purso.
- Terrace system – updated screw: Z4832 to RUUVI4832.
- P76E fixed drainage Machining on Profiles 23330/23331.
- LK90X added K2573 fastening piece for hinges JSMHAHN/LV20.
- Fixed weight information for articles PUR20xXX.
- P76E – changed screw from RUUVI4880 to UPPRUUVI4880.
- LK78X outward open windows – hardware changed from MILU to GILU.
- P50L (new) added missing U-values.

What's Coming

- New system P80 EI30 Sa200.
- P76E New glass thickness 60-61mm, new profiles.
- Automatic doors to façade.
- CE Data updated.
- Product CO2 values.

Contacts:

Edgard Bodnar
R&D Specialist
Edgard.Bodnar@purso.com
+370 608 30 796

Customer and Architect support
Buildinginfo@purso.fi
+358 334 04 600